



House Share

Bushbury Lane, Wolverhampton

£300,000 asking price



7



2

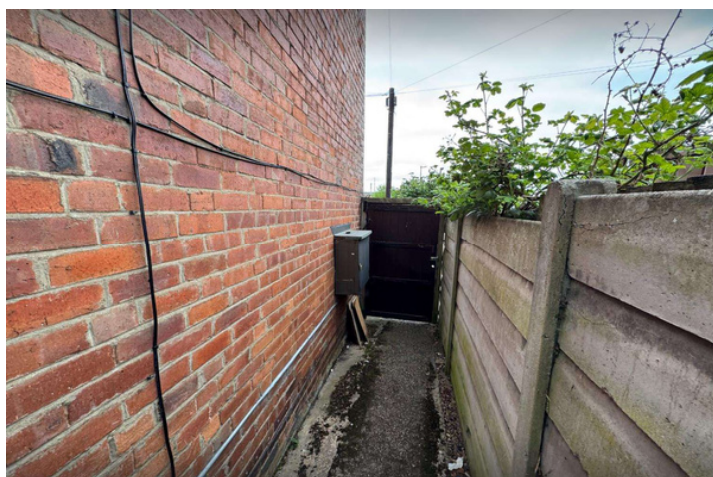


1



TORCELLO
PROPERTIES

partners of **Concentric**



AT A GLANCE



7



2



1

- ☐ 7 Occupied Rooms
- ☐ Potential for Rents to Reach £3500 - £4000pcm
- ☐ Cosmetic Works Needed Throughout

MATERIAL INFO

- ☐ Freehold
- ☐ EPC - E
- ☐ Council Tax - A
- ☐ Gas Central Heating
- ☐ Standard Construction Type
- ☐ Driveway & Street Parking

DESCRIPTION

Investment Opportunity with Tenants in Place
- HMO on Bushbury Lane, Wolverhampton!
This Freehold property offers a unique opportunity as a House Share and is currently operating as an HMO.

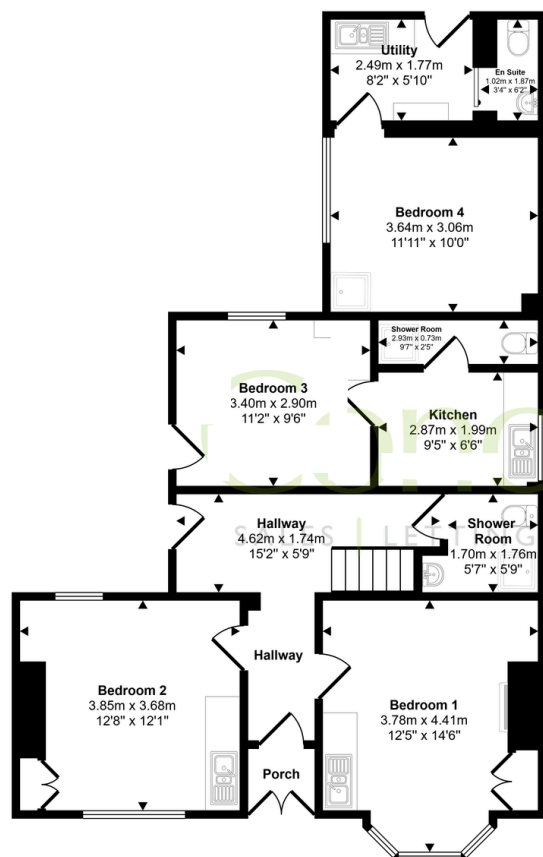
Boasting seven occupied rooms, a shared bathroom, communal lounge and kitchen, this property is ideal for those seeking a ready-made investment. Currently operating as an HMO with tenants in-situ with scope for monthly income to achieve between £3,500 - £4,000pcm, this residence presents a seamless transition for the new owner.

Located close to the Stafford Road, residents will benefit from excellent transport links and proximity to local amenities and green spaces. With no upward chain, this property is a promising buy-to-let investment opportunity.



Approx Gross Internal Area
151 sq m / 1628 sq ft

FLOOR PLAN



Ground Floor
Approx 85 sq m / 918 sq ft



First Floor
Approx 66 sq m / 709 sq ft

This floorplan is only for illustrative purposes and is not to scale. Measurements of rooms, doors, windows, and any items are approximate and no responsibility is taken for any error, omission or mis-statement. Icons of items such as bathroom suites are representations only and may not look like the real items. Made with Made Snappy 360.

EPC RATING

Score	Energy rating	Current	Potential
92+	A		
81-91	B		86 B
69-80	C		
55-68	D		
39-54	E	50 E	
21-38	F		
1-20	G		

For more information
about this property, or to
book a viewing – please
contact us today