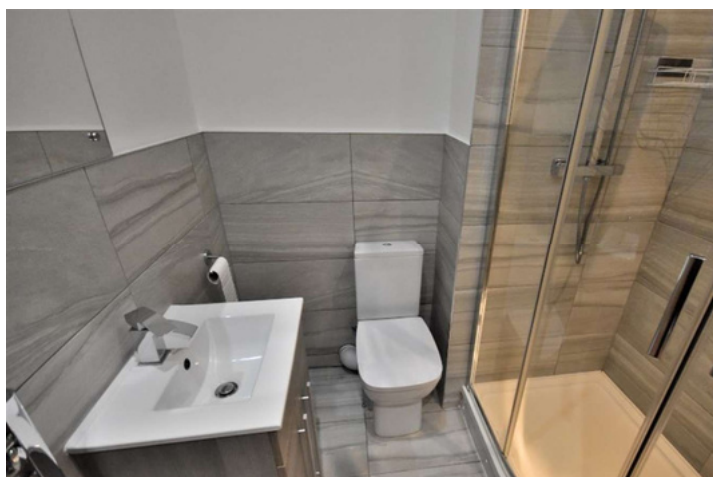




Block Of Flats Block Of Flats  
Queens Street, Wolverhampton MAKE  
£1,350,000 asking price





## AT A GLANCE



11



11



11

- ☐ No Upward Chain
- ☐ Sold with Freehold
- ☐ Planning Permission to Add 6 More Units
- ☐ City Centre Location

## MATERIAL INFO

- ☐ Freehold
- ☐ EPC - TBC
- ☐ Council Tax – A
- ☐ Electric Heating
- ☐ Standard Construction Type
- ☐ Street Parking



## DESCRIPTION

A block of 11 flats in the City Centre of Wolverhampton with plans to add an additional 6 units to the existing building. All flats are currently tenanted and bringing in a combined total income of £7,000 per month with scope for rents to be reviewed and increased. All units are finished to a high standard throughout the building and limited street parking is available to tenants. All information provided, we have been advised by the seller and further due diligence is required. Any further information, please contact us.

MARKET VALUES: Guide Price:

£2,500,000 Rents Between: £650 -

£850pcm MATERIAL INFO: Tenure:

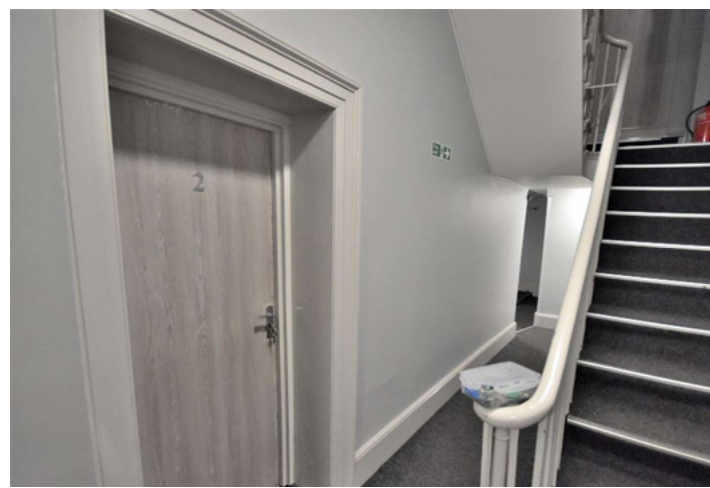
Freehold EPC: TBC Council Tax Band: A

Property Type: Block of Residential Flats

Heating Type: Electric Parking: Street

Construction Type: Standard

Power/Water Supply: Mains Other: N/A



## FLOOR PLAN



NO.	DESCRIPTION	DATE	STATUS
1	56 Queen Street Wolverhampton WV1 1ES	Oct '20	
2	Proposed First & Second Floor Plan	1:100@A3	
3	20012/005	REVISION	B

## EPC RATING

TBC

For more information  
about this property, or to  
book a viewing – please  
contact the us today