



Block Of 12 Flats
Temple Street, Wolverhampton
£1,000,000 asking price





AT A GLANCE



12



12



12

- ☐ No Upward Chain
- ☐ Tenants In-Situ
- ☐ City Centre Location

MATERIAL INFO

- ☐ Freehold
- ☐ EPC - C
- ☐ Council Tax - B
- ☐ Gas Central Heating
- ☐ Standard Construction Type



DESCRIPTION

OPPORTUNITY DETAILS: A block of 12 studio flats in Wolverhampton City centre. All information provided, we have been advised by the seller and further due diligence is required. Any further information, please contact us.

MARKET VALUES:

Guide Price: £1,000,000

Rents Between: £410 - £625pcm

Company lease in-situ for 6 years.

Comparable:

<https://www.rightmove.co.uk/best-price-guide-report/c5430701-639c-4189-9841-b6e637f51d07>

MATERIAL INFO:

Tenure: Freehold

EPC: TBC

Council Tax Band: A

Property Type: Block of Residential Flats

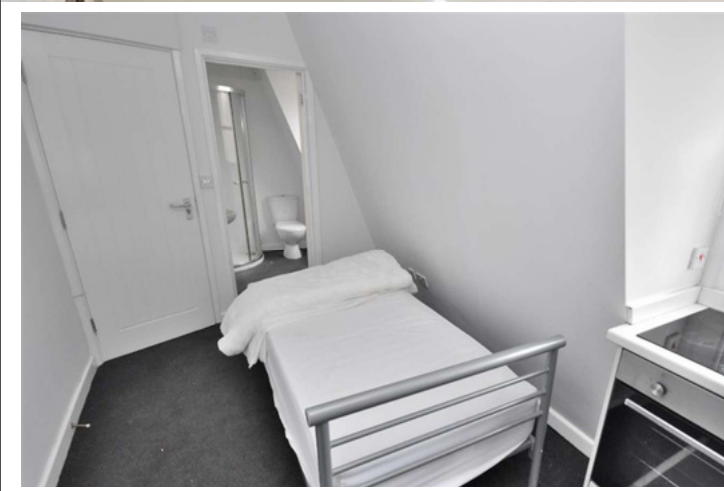
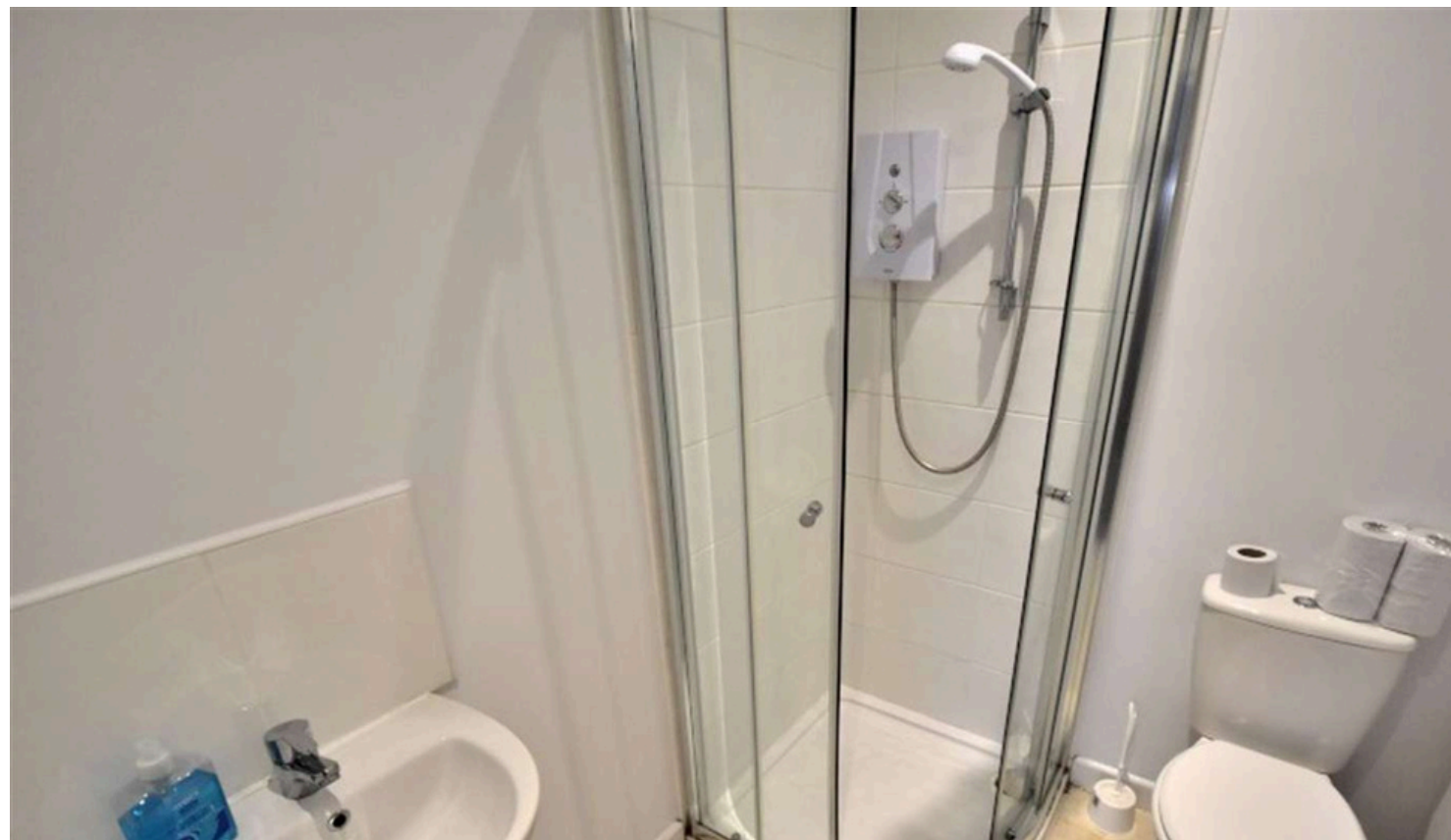
Heating Type: TBC

Parking: TBC

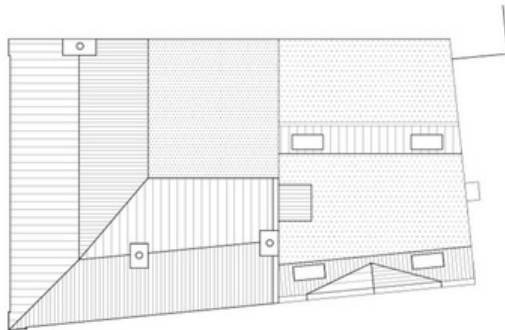
Construction Type: Standard

Power/Water Supply: Mains

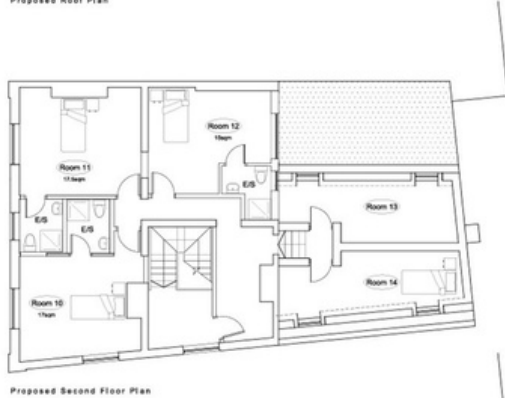
Other: N/A



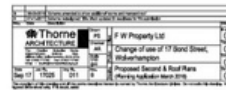
FLOOR PLAN



Proposed Roof Plan



Proposed Second Floor Plan



EPC RATING

For more information about this property, or to book a viewing – please contact us today